



Báo Bài Tuần

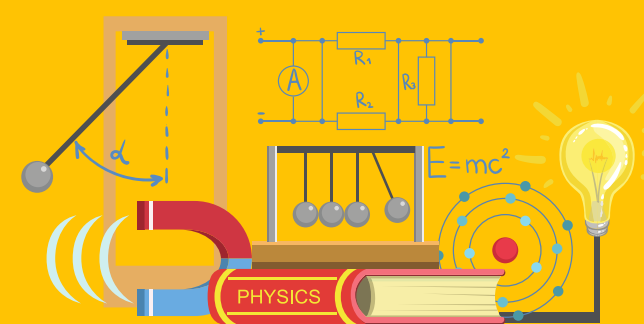
Vui lòng truy cập

<https://ipro2.ismart.edu.vn>

hoặc quét mã để tải iPRO2 và ôn tập



Hotline: 1900 088 893





MATTER

Grade 6

Water cycle



www.ipro2.ismart.edu.vn

What are common phase change processes?

They are **melting, **freezing**, **evaporation** and **condensing**.**

melting

tan chảy



freezing

sự đóng băng



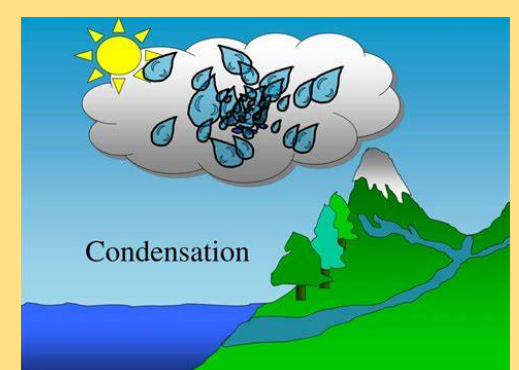
evaporation

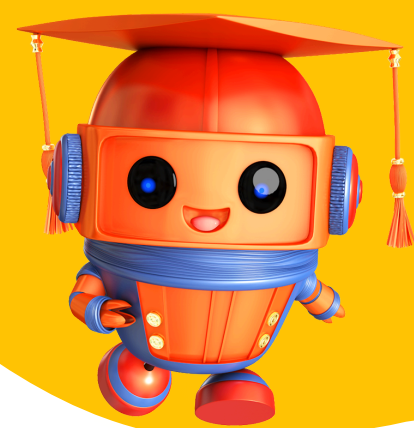
sự bay hơi



condensing

ngưng tụ





UNIT 1: MATTER

Lesson 4

Materials

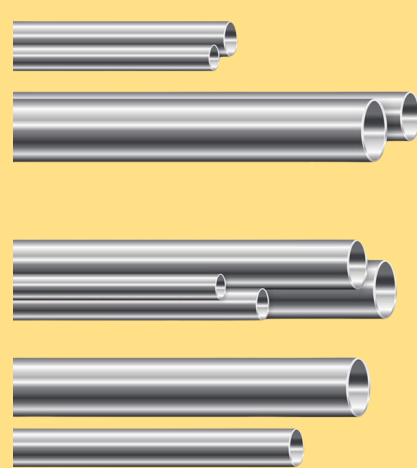


www.ipro2.ismart.edu.vn

1. **Wood** is a natural material. It is collected from trees and is usually used for making furniture.
2. **Iron** is a natural material and is one of the most popular metals. It is widely used in making tools and building structures.
3. **Glass** is a man-made material. It is produced from melted sand. It is used in making mirrors, fish tanks and cups.
4. **Plastic** is a man-made material. Plastic can be found in tools, vehicles, electronic devices, etc.

iron

sắt



plastic

nhựa



wood

gỗ



glass

thủy tinh

