



Báo Bài Tuần

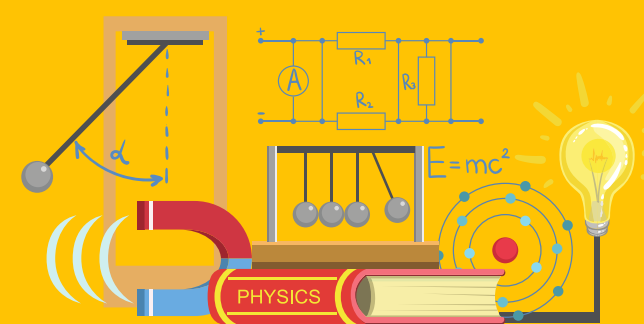
Vui lòng truy cập

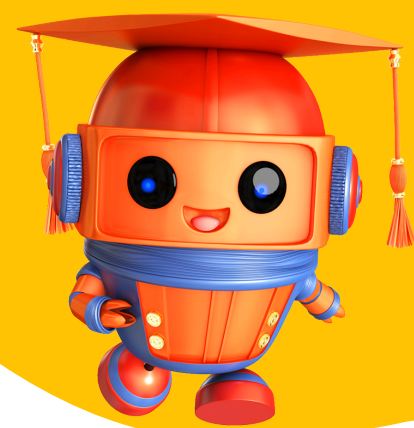
<https://ipro2.ismart.edu.vn>

hoặc quét mã để tải iPRO2 và ôn tập



Hotline: 1900 088 893





UNIT 2: PROPORTIONS

Lesson 2

Direct proportion



www.ipro2.ismart.edu.vn

- Variable** y is **directly proportional** to variable x if they are related by the formula $y = kx$ (k is a non-zero constant).
- If y is directly proportional to x with the **constant of proportionality** k , then x will be directly proportional to y and the constant of proportionality is $\frac{1}{k}$ (k is different from zero).

variable

biến số

3 dollars/cupcake








$$y = 3x$$

x	1	2	3	4
y = 3x	3	6	9	12

x: number of cupcakes
y: amount of money

directly proportional

tỷ lệ thuận

	increase				
					
	1	2	4	6	
	2	4	8	12	
	increase				
					

$\frac{\text{money}}{\text{cupcake}} = 2$

constant of proportionality

hằng số tỷ lệ

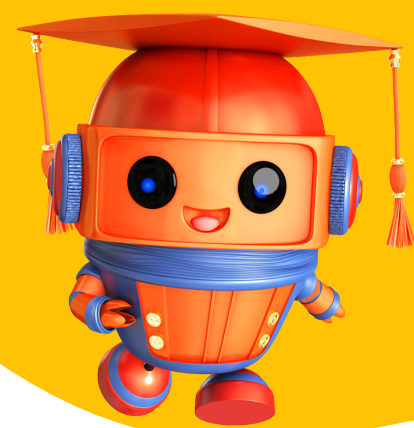
3 dollars/cupcake



x: number of cupcakes
y: amount of money

$$y = 3x$$

x	1	2	3	4
y = 3x	3	6	9	12



Lesson 2

Distance-time graph

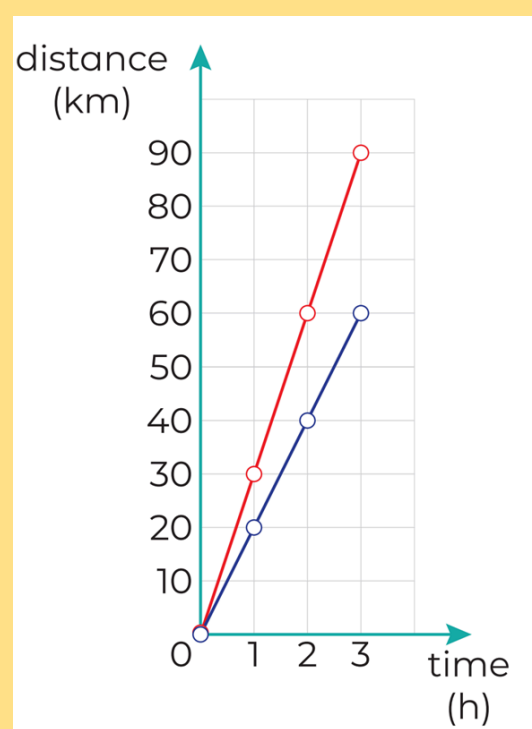


www.ipro2.ismart.edu.vn

1. A **distance-time graph** describes how something moves.
2. A **data table** records the distance an object travels in equivalent periods of time.

distance-time graph

đồ thị quãng đường theo thời gian



data table

bảng dữ liệu

Car				
time (h)	0	1	2	3
distance (km)	0	30	60	90

Truck				
time (h)	0	1	2	3
distance (km)	0	20	40	60